

1500s



1536



1534
HENRY VIII DECLARES HIMSELF
HEAD OF THE CHURCH OF
ENGLAND AND BREAKS WITH THE
CATHOLIC CHURCH IN ROME

Marlow Manor

Built on land originally owned by William the Conqueror! The manor was rebuilt in 1758 and still stands to this day. Changing hands several times, other notable owners include the Victorian Lord Mayor of London and Bank of England Director, Robert Clayton.

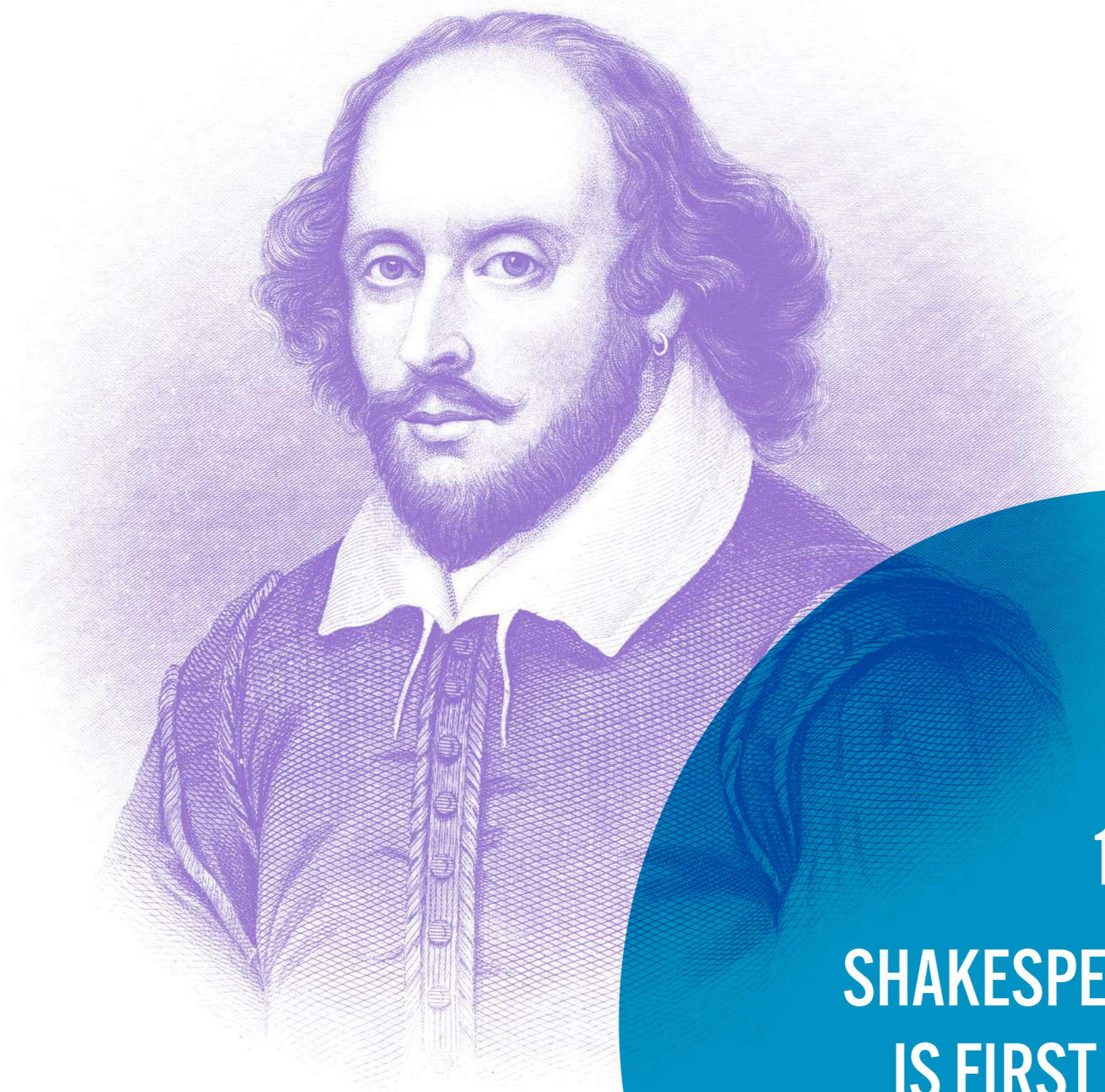


TODAY, THE SITE HOUSES
PLACES LEISURE'S COURT
GARDEN LEISURE CENTRE

1600s



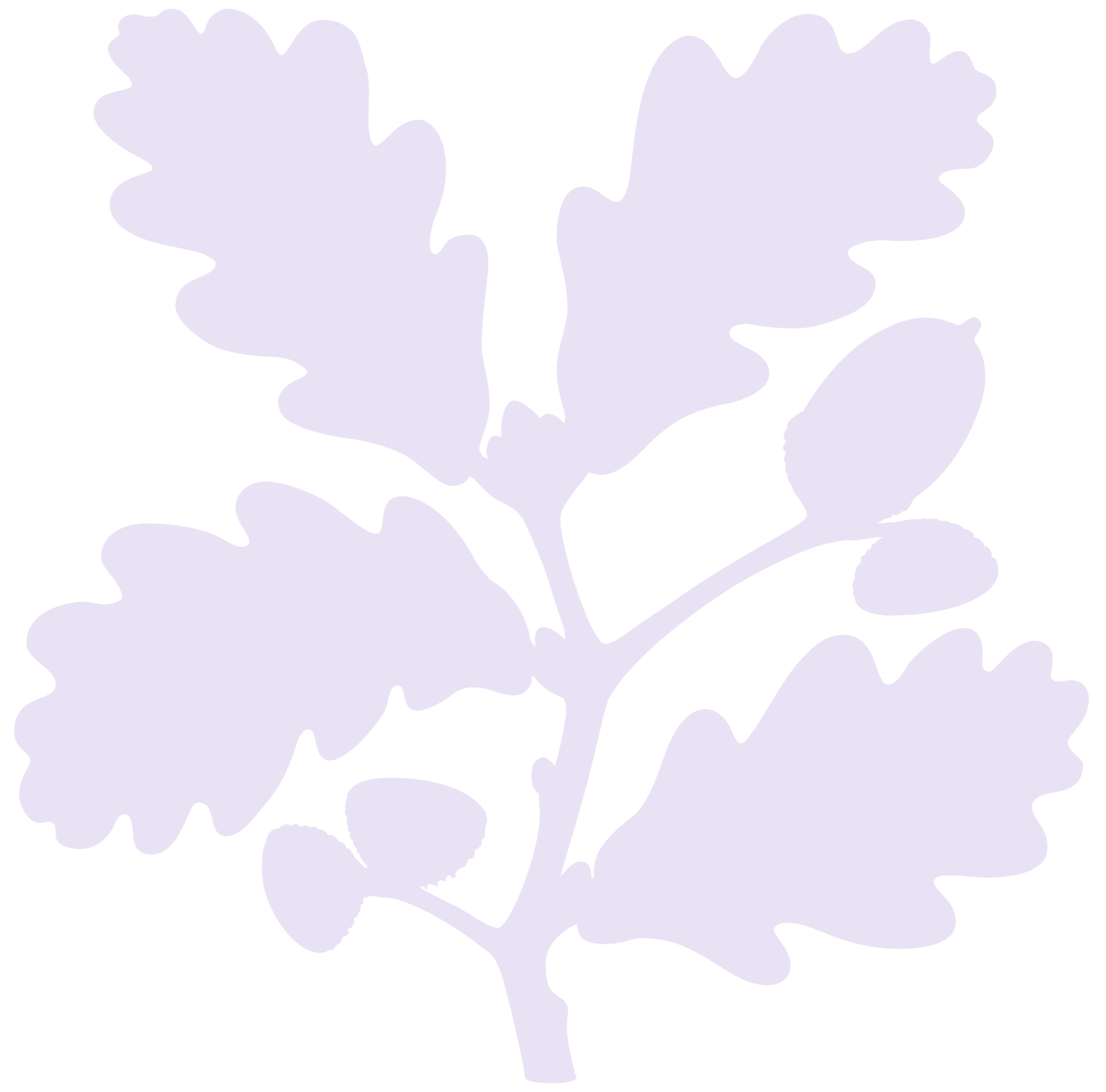
PRE
1650s



1600
**SHAKESPEARE'S HAMLET
IS FIRST PERFORMED**

Dymocks Building

Our oldest property, Dymock's Building in Falkirk, Scotland is built. Originally owned by the Duke of Hamilton, the building has been used to process whale oil, as a motorcycle repair shop, and by the National Trust. It was developed into eight flats by Places for People Scotland.



National
Trust

1700s



1707

ACT OF THE UNION UNIFIES THE KINGDOMS OF ENGLAND, SCOTLAND AND WALES TO CREATE GREAT BRITAIN

1700s



Smith's Dock, North Tyneside

The land was originally owned by the Duke of Northumberland and was a working dock for almost three centuries, building and repairing hundreds of ships – including British Navy Trawlers during the Second World War.



As one of the last working docks on Tyneside, Smith's Dock closed in 1987

IN 2006 IT WAS ACQUIRED BY PLACES FOR PEOPLE AND IS BEING DEVELOPED INTO A MIXED-TENURE RESIDENTIAL SITE.



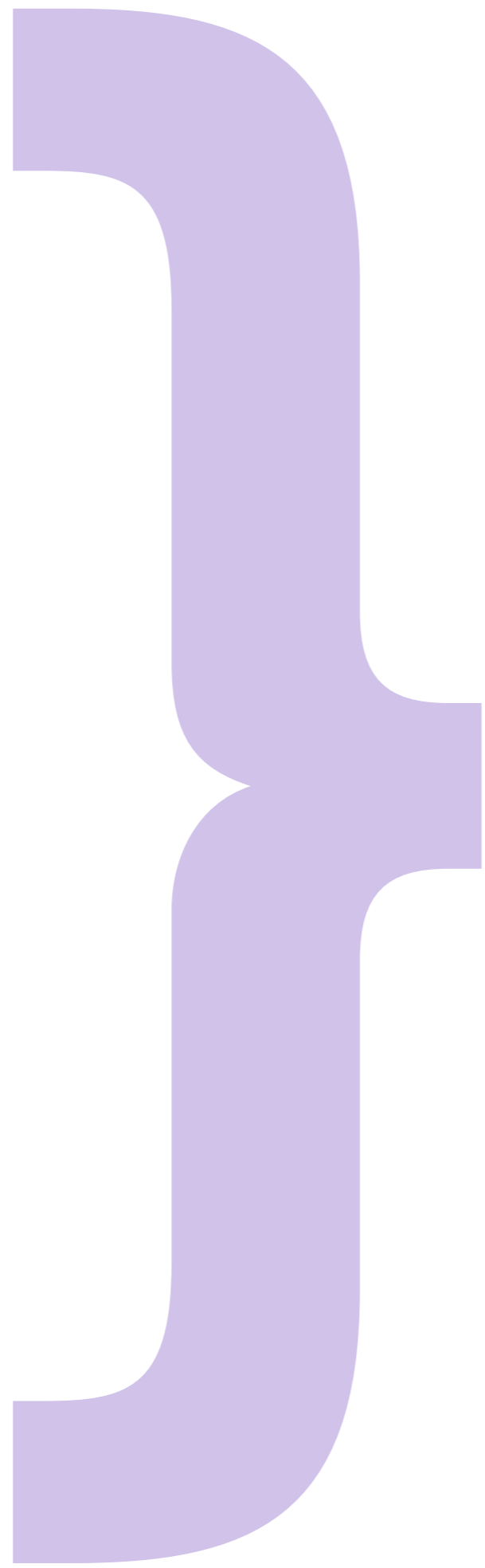
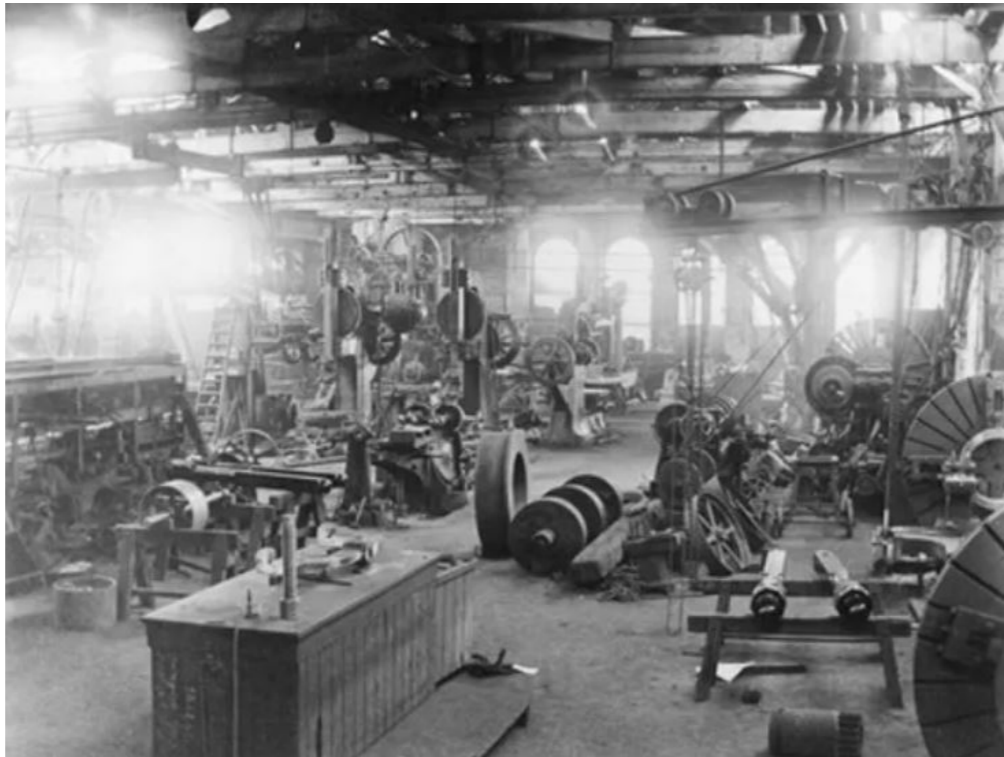
1800s

1800s



Wolverton Park

The Grand Union Canal and railway works opens to accommodate Britain's emergent railway system.



In 2011, the site was redeveloped into Wolverton Park, Milton Keynes, comprising 300 homes for social rent, private sale and Shared Ownership, with train sheds that used to house Queen Victoria's train carriages also being refurbished into homes.



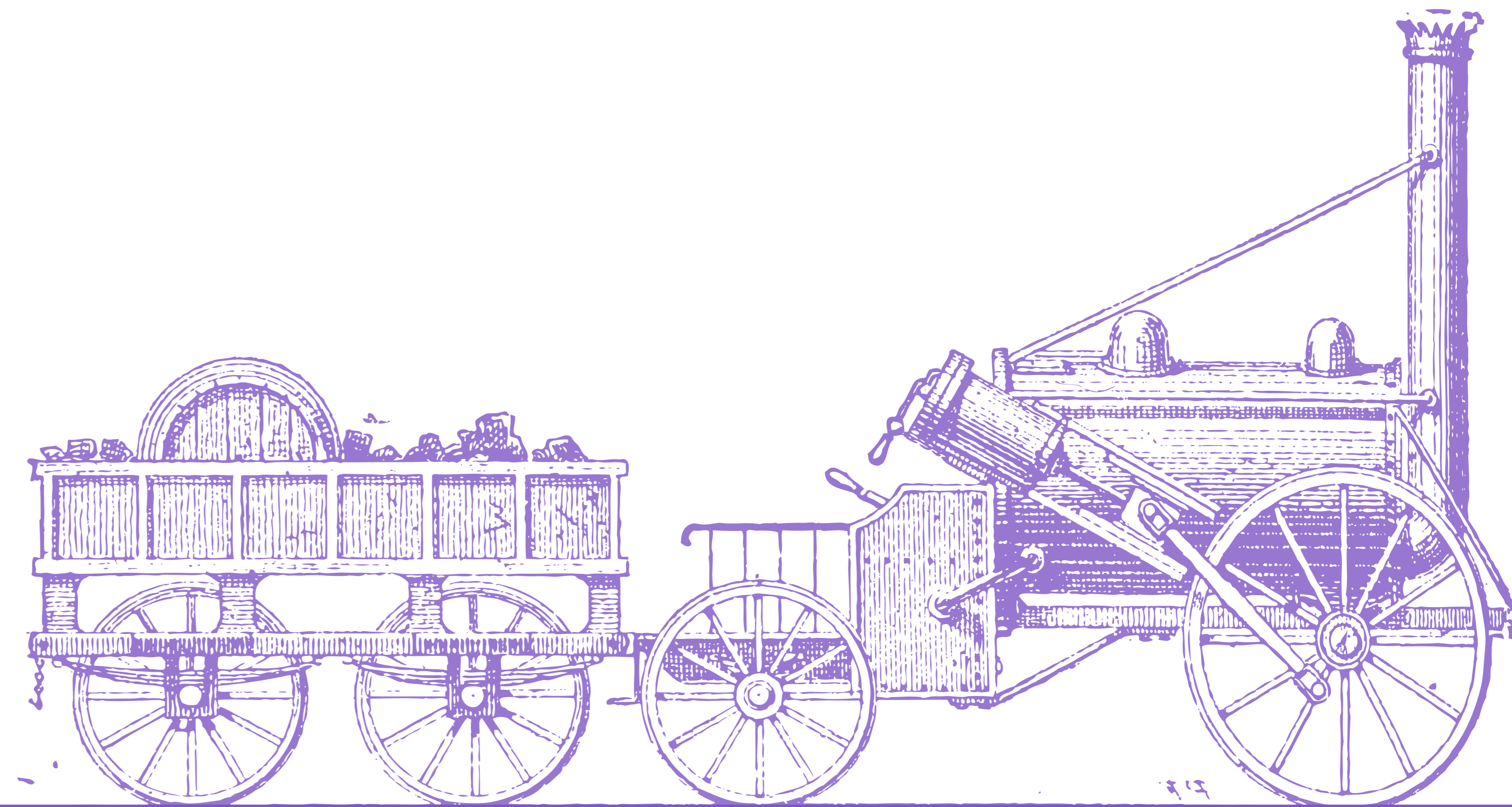
1815
BRITAIN IS VICTORIOUS IN THE
BATTLE OF WATERLOO



1820s



1829



Drummond Street

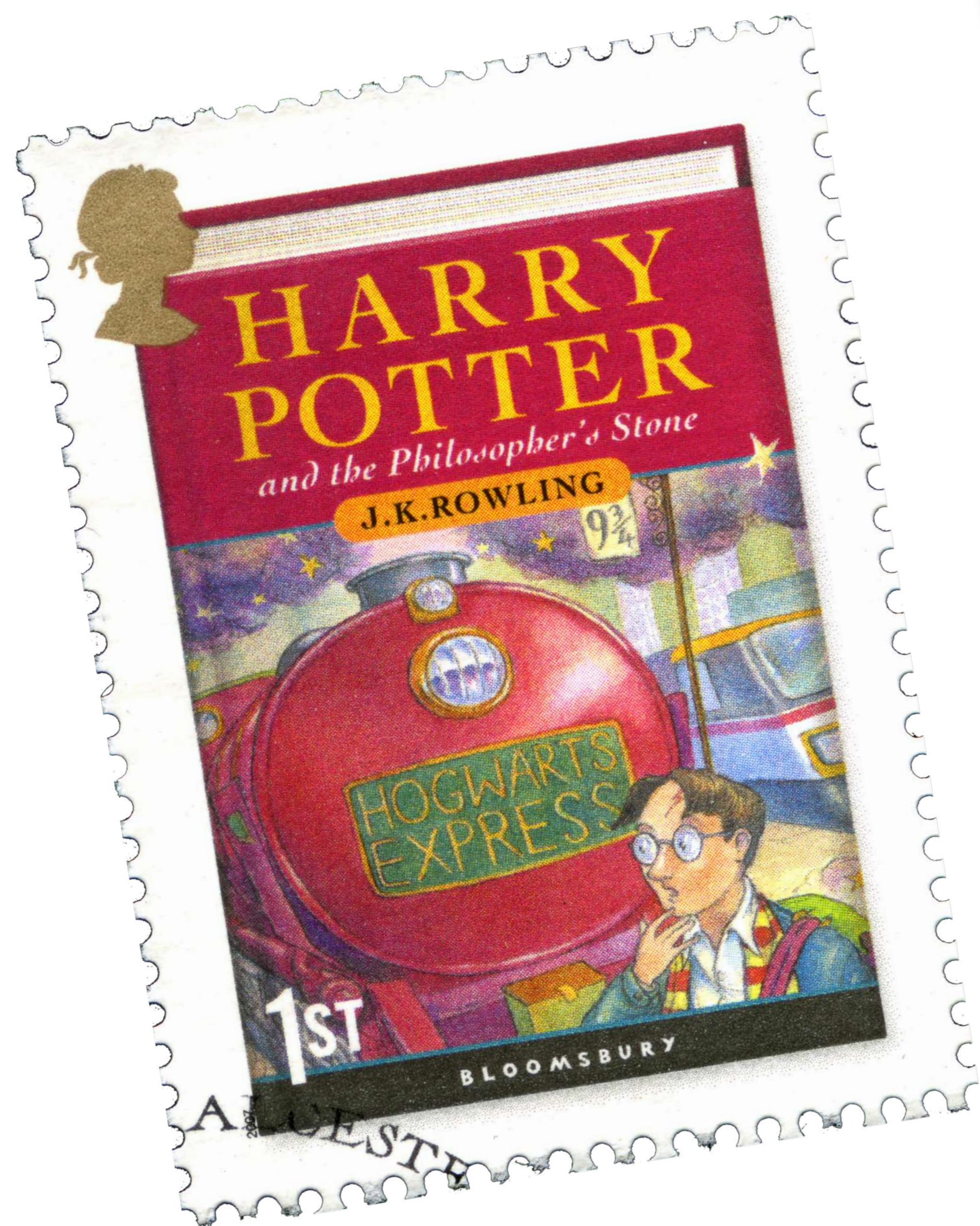
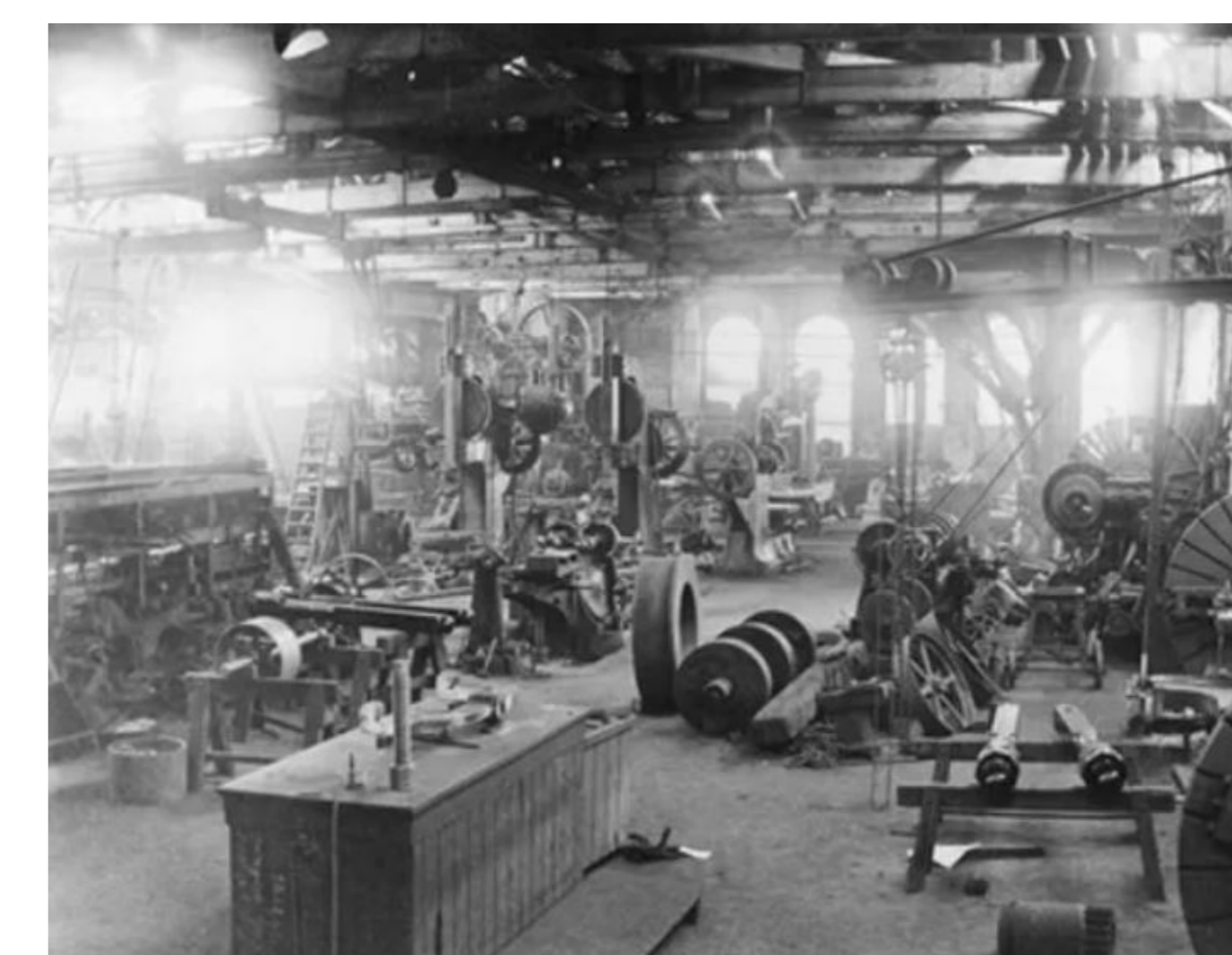
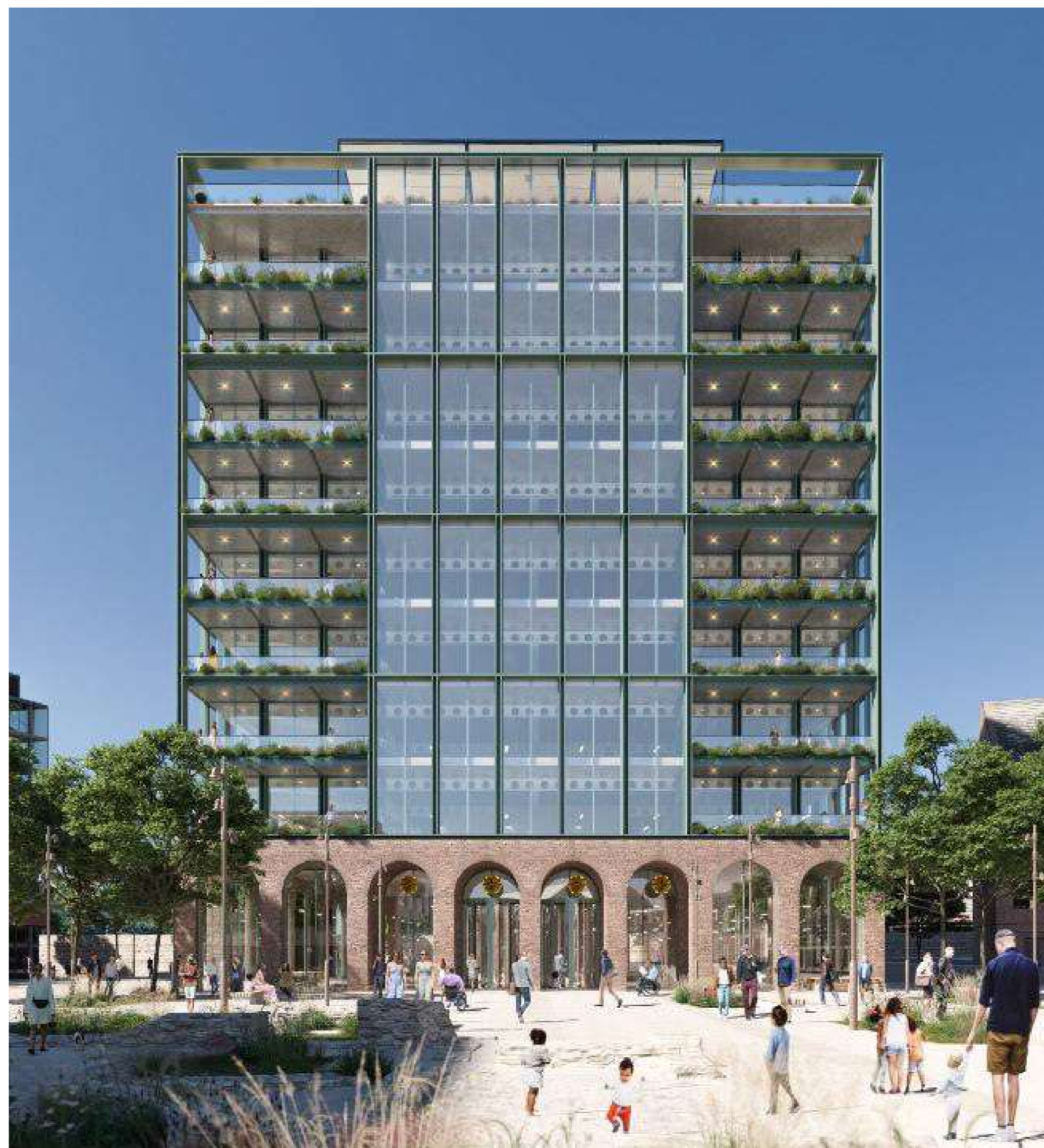
Tenements are built in Edinburgh and stand as a prime example of Victorian tenement housing. In the 1980s, the street was home to author J.K. Rowling.



THIS SITE IS NOW OWNED AND MANAGED BY PLACES FOR PEOPLE SCOTLAND

Stephenson's Rocket

The Rainhill Trials are held, testing early steam locomotives on the UK's first intercity railway between Liverpool and Manchester. Robert Stephenson's 'Rocket' emerged victorious and is remembered as a pioneer of Victorian steam power. Stephenson developed the Rocket in Newcastle, and his Pattern Shop remains a listed building that is currently being developed into a workspace for a new generation of innovators.

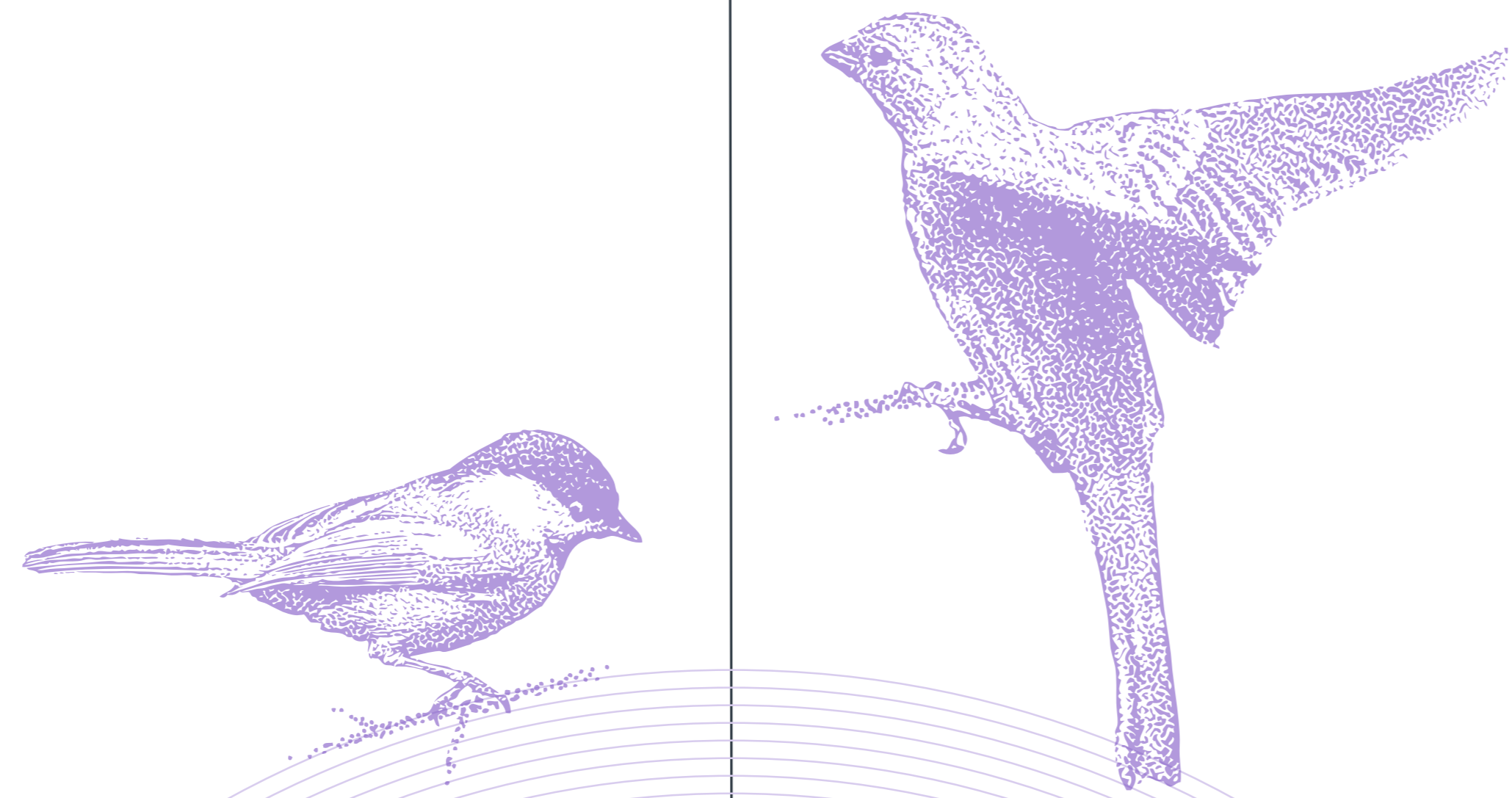




1890s



1838
CORONATION OF QUEEN VICTORIA



1859
CHARLES DARWIN'S 'THE ORIGIN
OF SPECIES' IS PUBLISHED

Harehills

The Harehills neighbourhood in Leeds is built to house the city's many factory workers. Various sanitary reforms later see indoor toilets and plumbing being introduced.



The area retains typical examples of Victorian 'back-to-back' terraced housing. Places for People continues to manage many homes for affordable rent in the neighbourhood.

1897

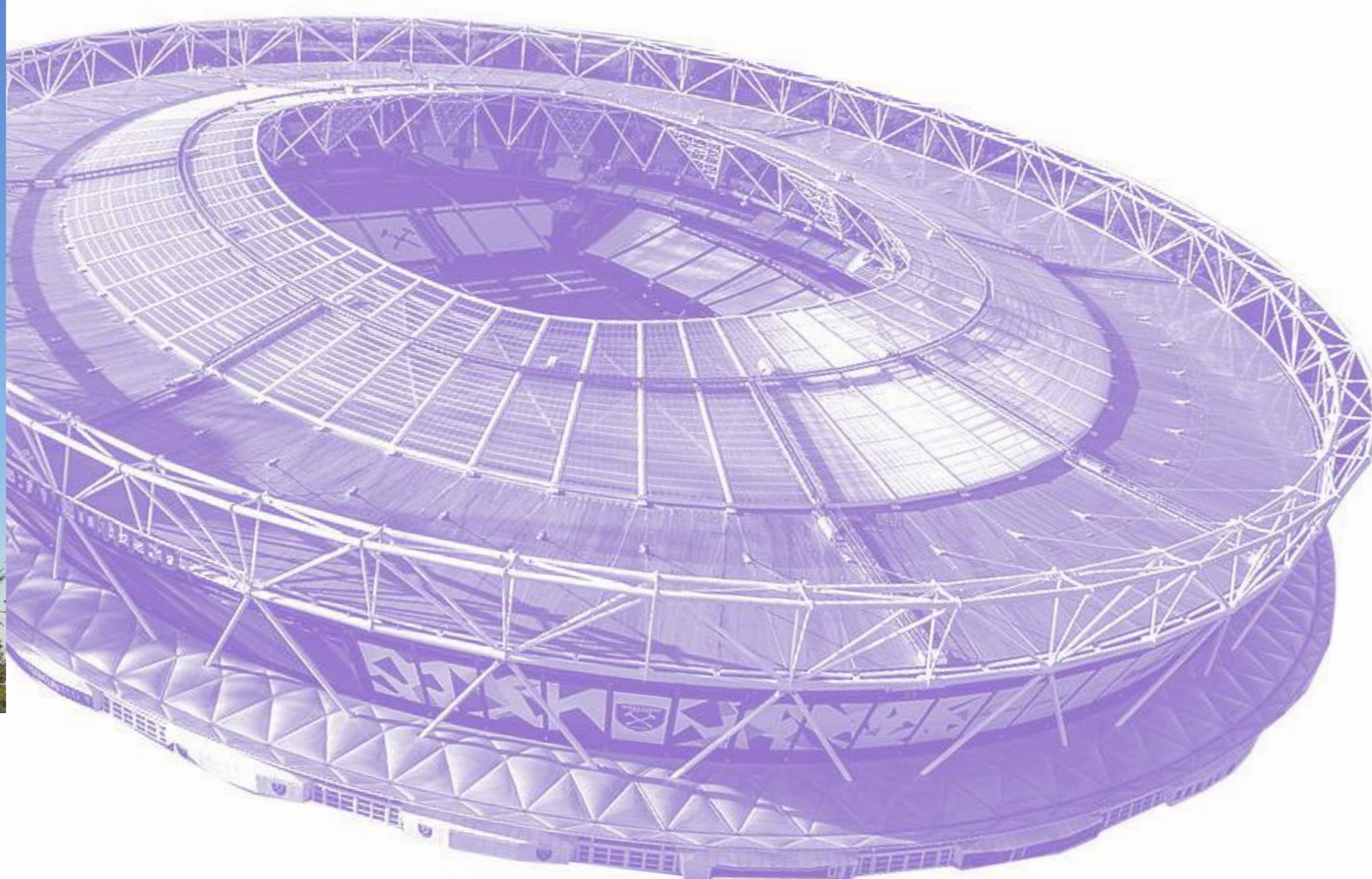


1898



East Wick and Sweetwater

The Clarnico Factory is built in Hackney Wick, East London. Clarnico was one of several factories that stood on the site of ongoing Places for People development, East Wick and Sweetwater, named in honour of the confectionery factory and home to the Clarnico Club coffee shop and Community centre.



East Wick and Sweetwater also features a mural marking other notable elements of the site's history, including its role in the London 2012 Olympics, and its history of greyhound racing at Hackney Stadium.

The Engine Yard

Edinburgh's Shrubhill Workshops and Power Station is built to accommodate the city's cable-hauled tram system, following the end of the horse-drawn tram era.



the engine yard



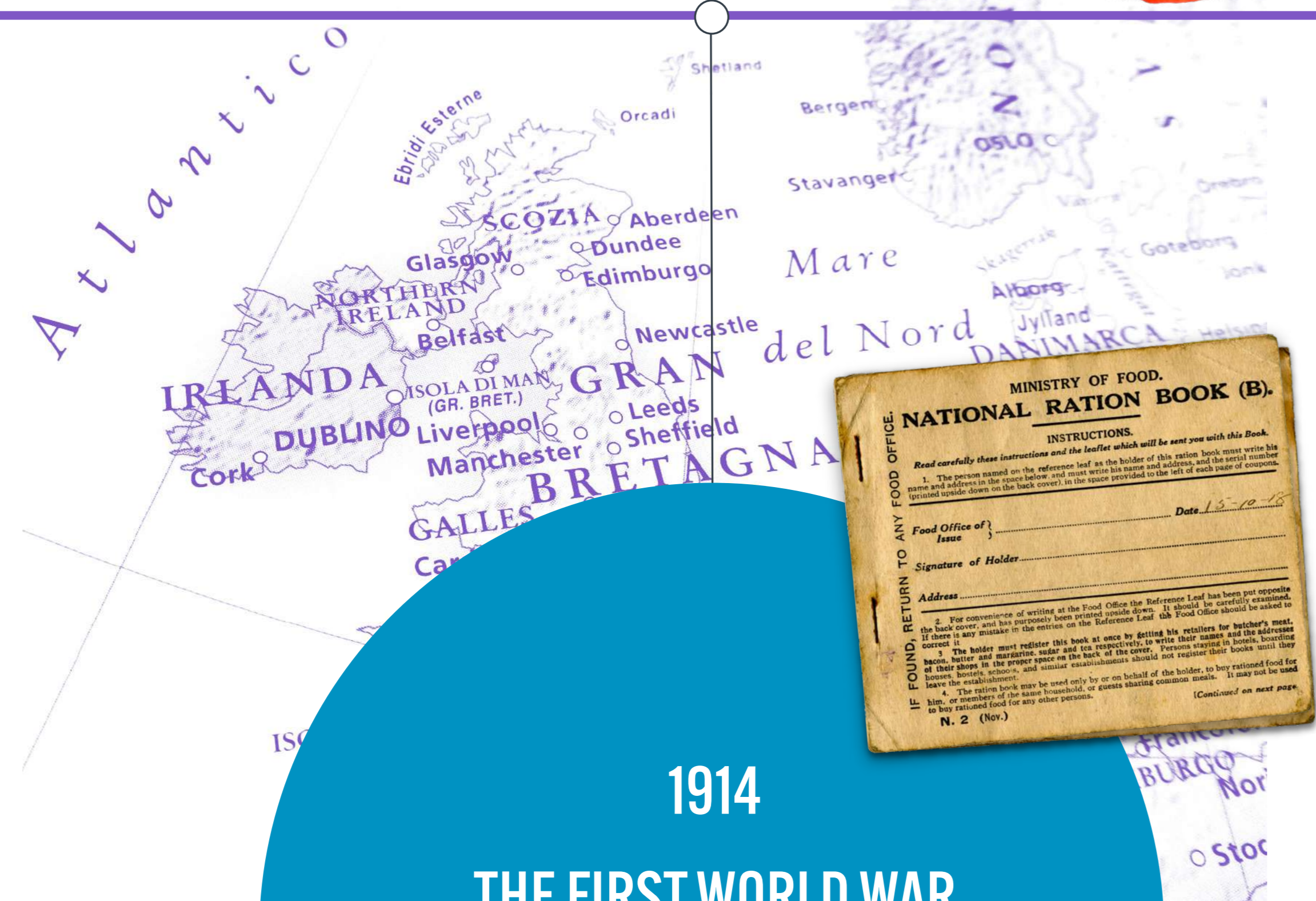
THE SITE IS NOW HOME TO THE ENGINE YARD, A VIBRANT URBAN MIXED-TENURE COMMUNITY.

The former tram sheds – 'Big Shed' and 'Wee Shed' – where the trams were built and repaired are now listed buildings and have been sensitively restored into stylish and unique apartment blocks.

1900s



1930



1914
THE FIRST WORLD WAR
BREAKS OUT

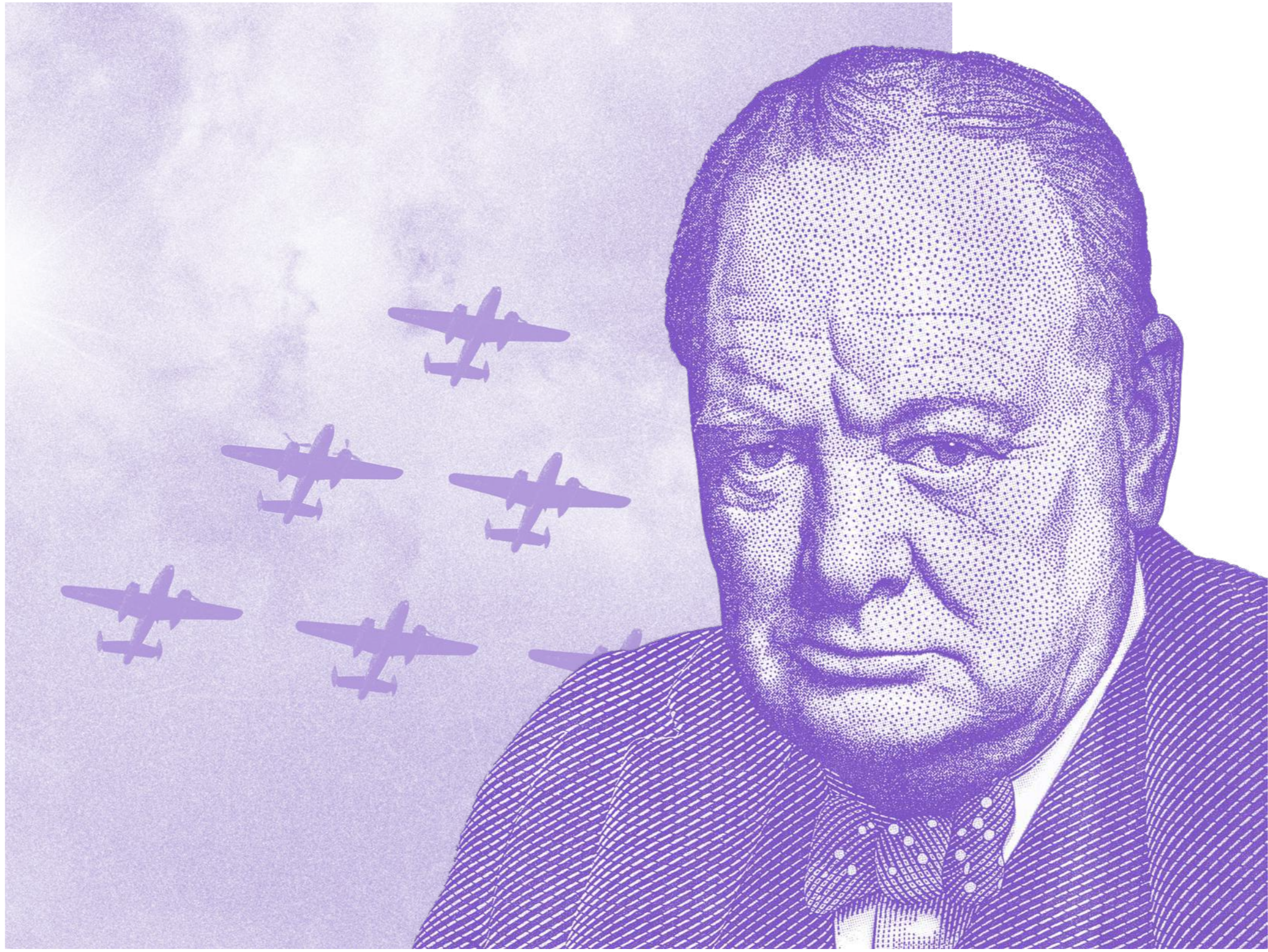


1918
THE RIGHT TO VOTE IS GIVEN TO
SOME WOMEN IN BRITAIN FOR
THE FIRST TIME

Aldershot Lido
Aldershot Lido is developed by the local borough council, who restored a natural lake that had become overgrown with weeds. It was the focus of the wider Aldershot Improvement Scheme and in 1948 was the venue for the Modern Pentathlon at the London Olympics. It continues to run as a Places Leisure Centre.



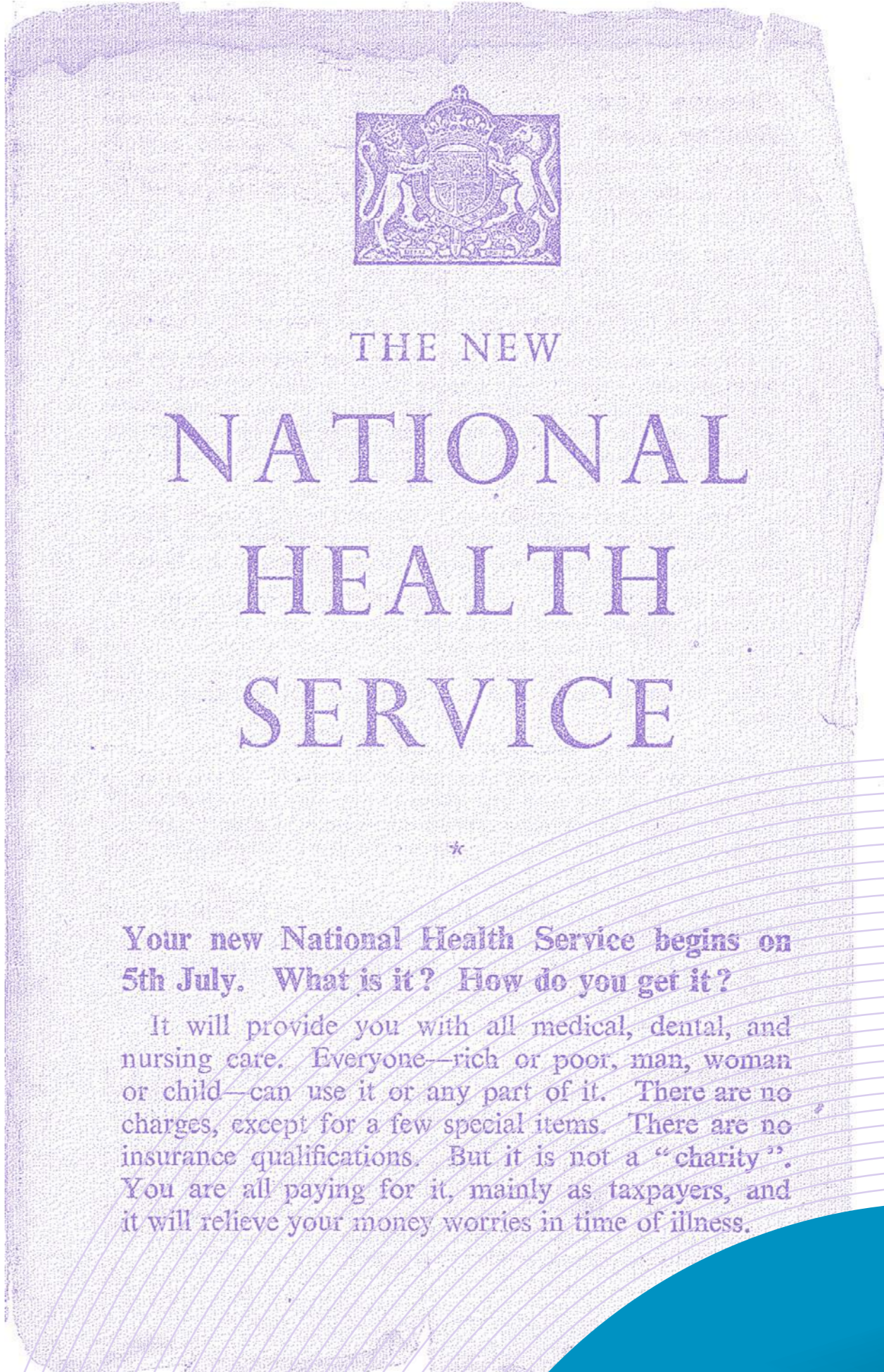
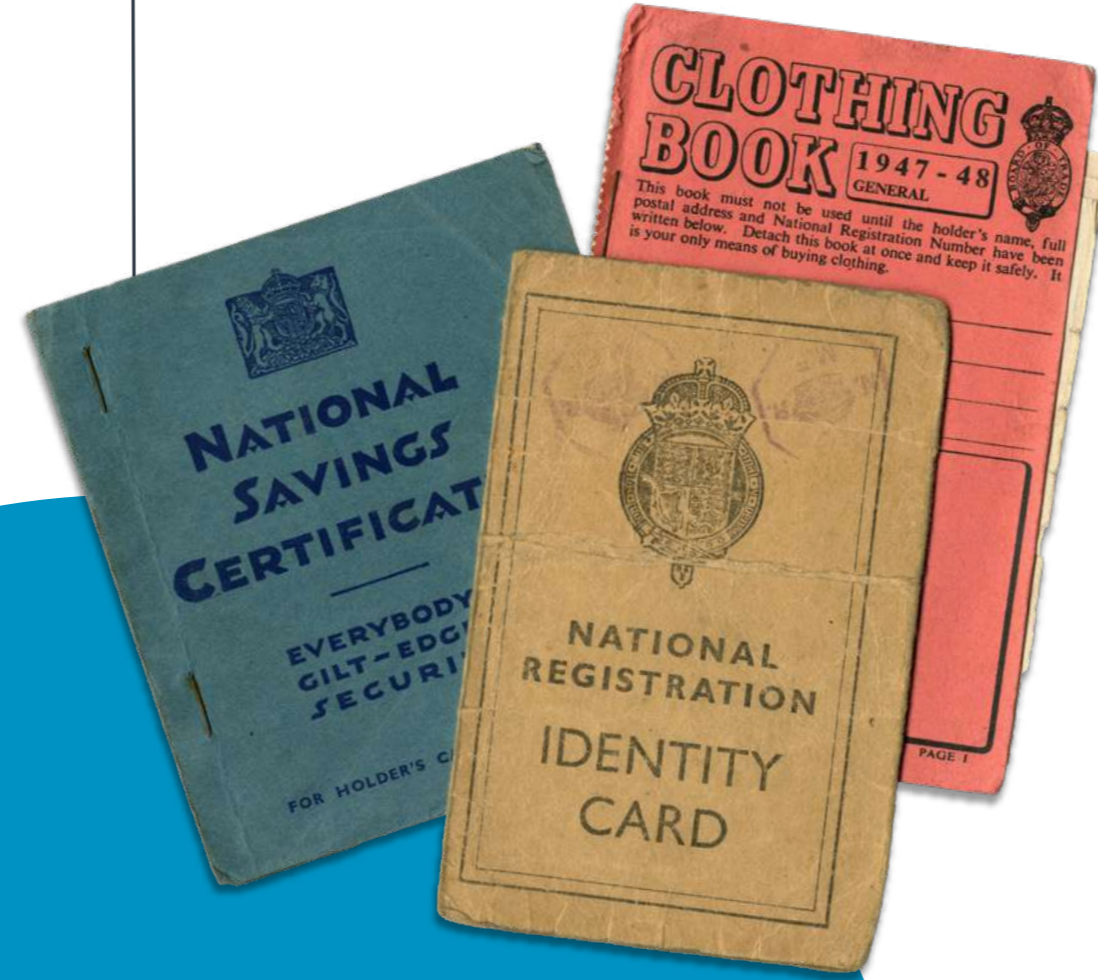
1930s



Craigmillar Primary School
The Craigmillar Primary School is built, now the location for Places for People Scotland's development of 83 mixed-tenure flats. The site is also home to arts and social enterprise centre The Space, which retains the 1935 mural 'Children at Play' by John Maxwell, as well as the John Maxwell Gallery.

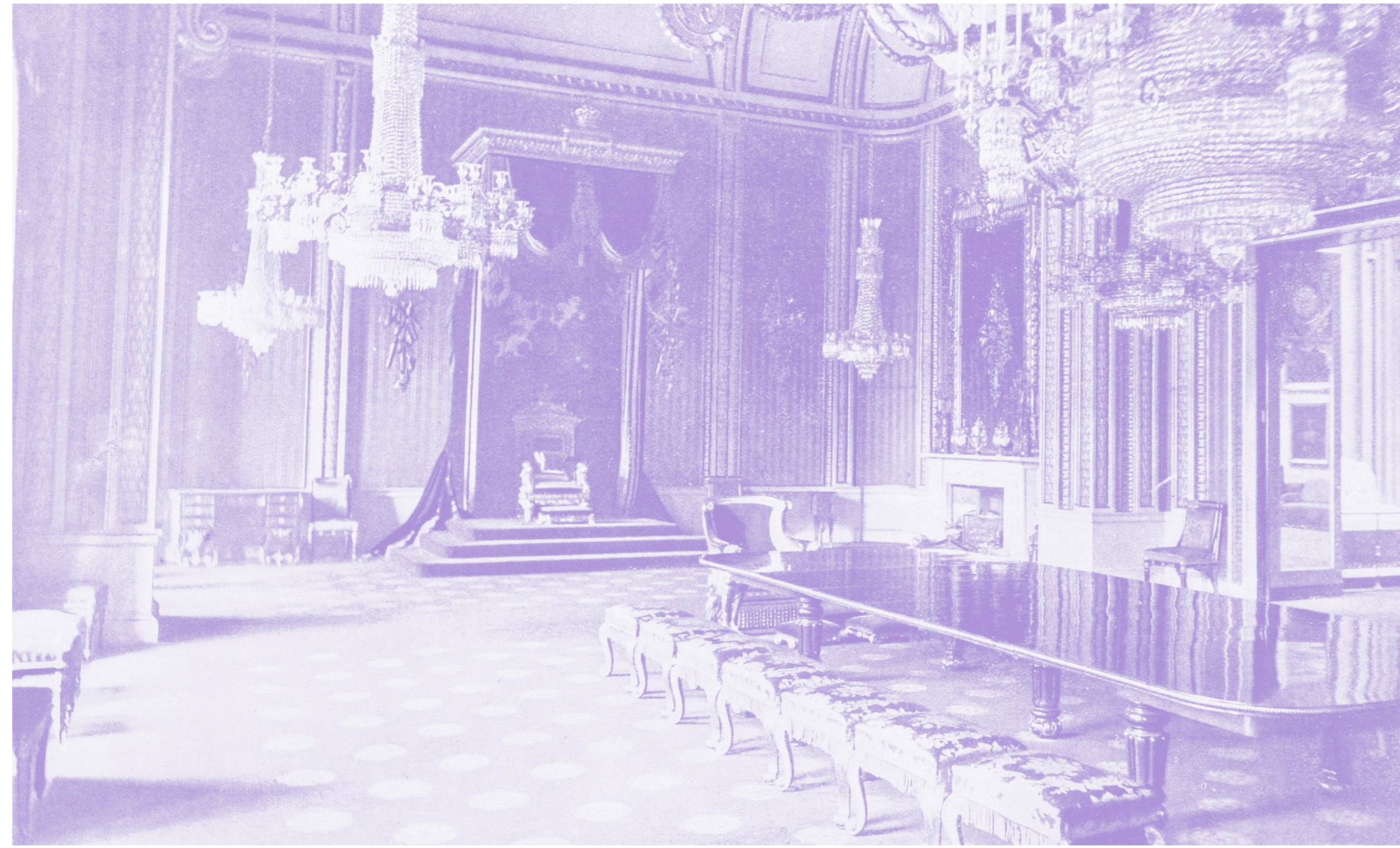


1939
THE SECOND WORLD WAR
BREAKS OUT



1948
THE NATIONAL HEALTH
SERVICE IS FOUNDED



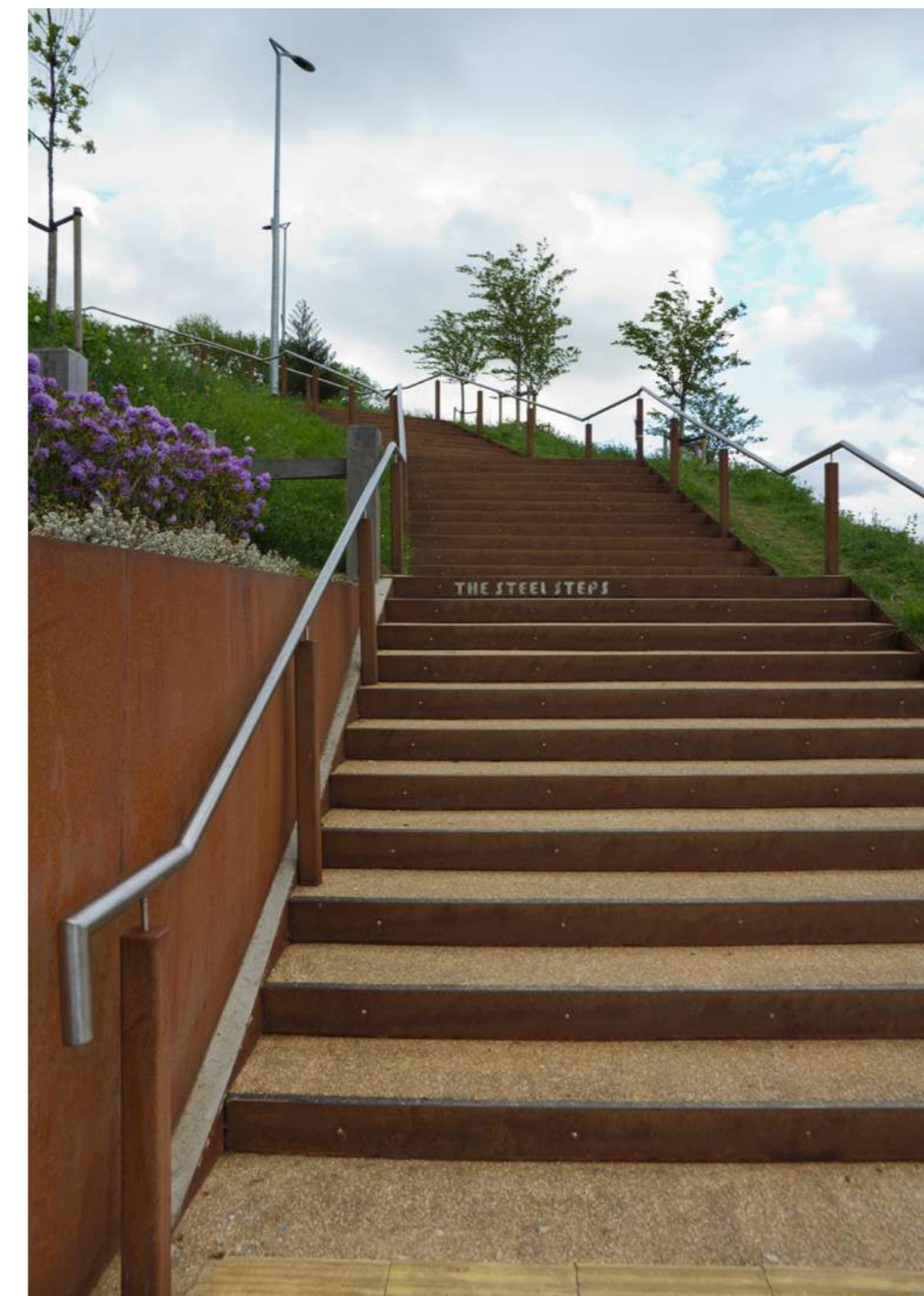


1958



Park Hill Estate

The Park Hill Estate in Sheffield is built. With over two million homes having been destroyed in the WWII Blitz, post-war Britain faced a major shortage of adequate housing.



One solution was the move to high-rise living, at the time a utopian idea to maximise the use of space while creating a new Community. Park Hill was one of the first of such tower blocks.

By the 1970s, the estate had fallen into disrepair and gained a reputation for crime and anti-social behaviour. However, in 1998, the tower blocks were redeveloped by our partner Urban Splash into award-winning modern mixed-tenure accommodation and Park Hill remains an iconic part of the Sheffield skyline.



1953
CORONATION OF QUEEN
ELIZABETH II



1963

THE BEATLES' DEBUT ALBUM
'PLEASE PLEASE ME' IS RELEASED



1965



North British Housing Association

North British Housing Association is founded in Preston, Lancashire, by its first CEO, John Foulerton, along with Harry Bentham, Cyril Fretwell and Charles Wilkinson. Their original aim was to create a co-ownership scheme, but they soon saw the opportunity to form large-scale developments of affordable rented housing. Their original motto was “to be a force for good in the housing sector”.

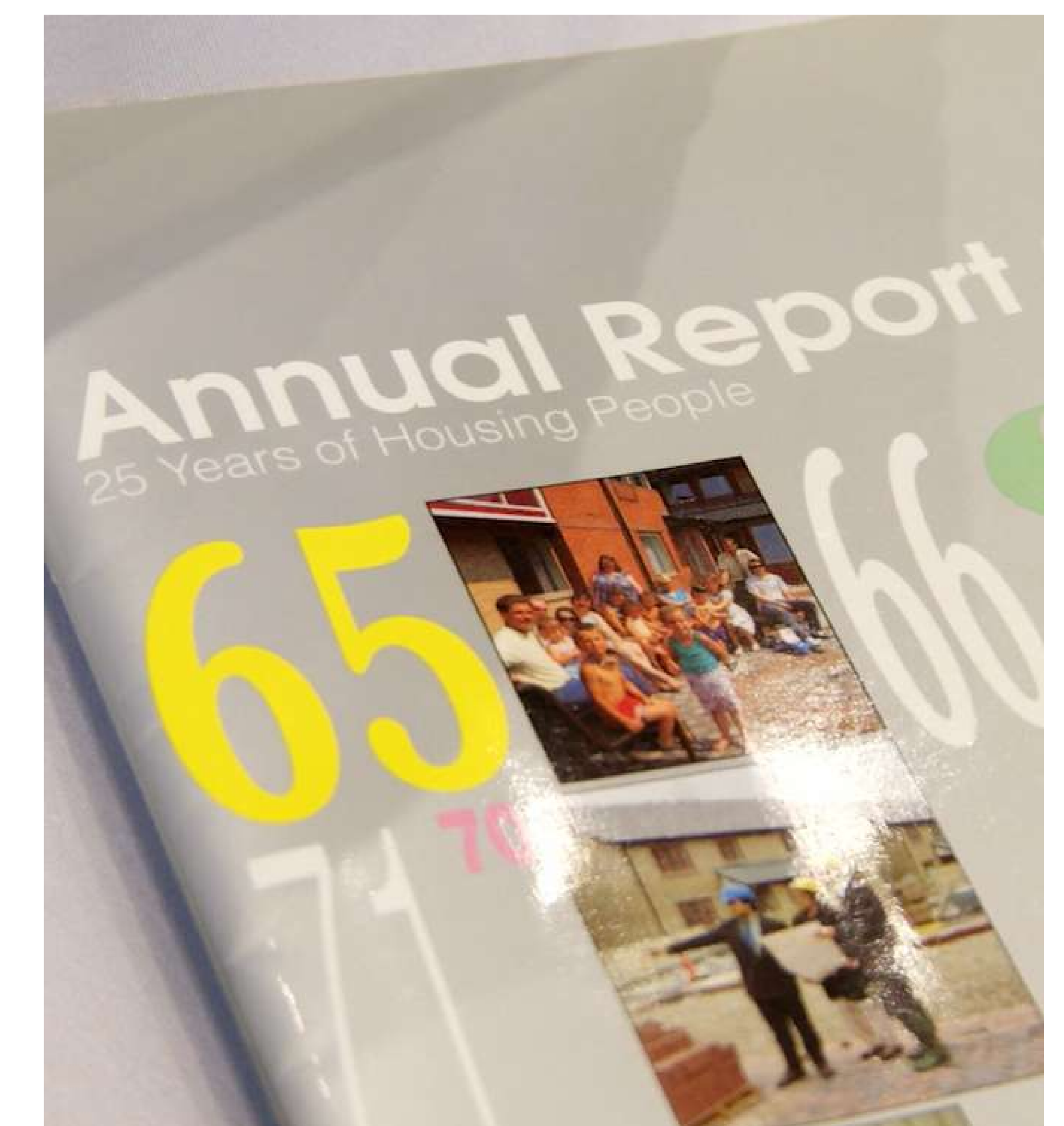


1966
ENGLAND WIN THE
FIFA WORLD CUP

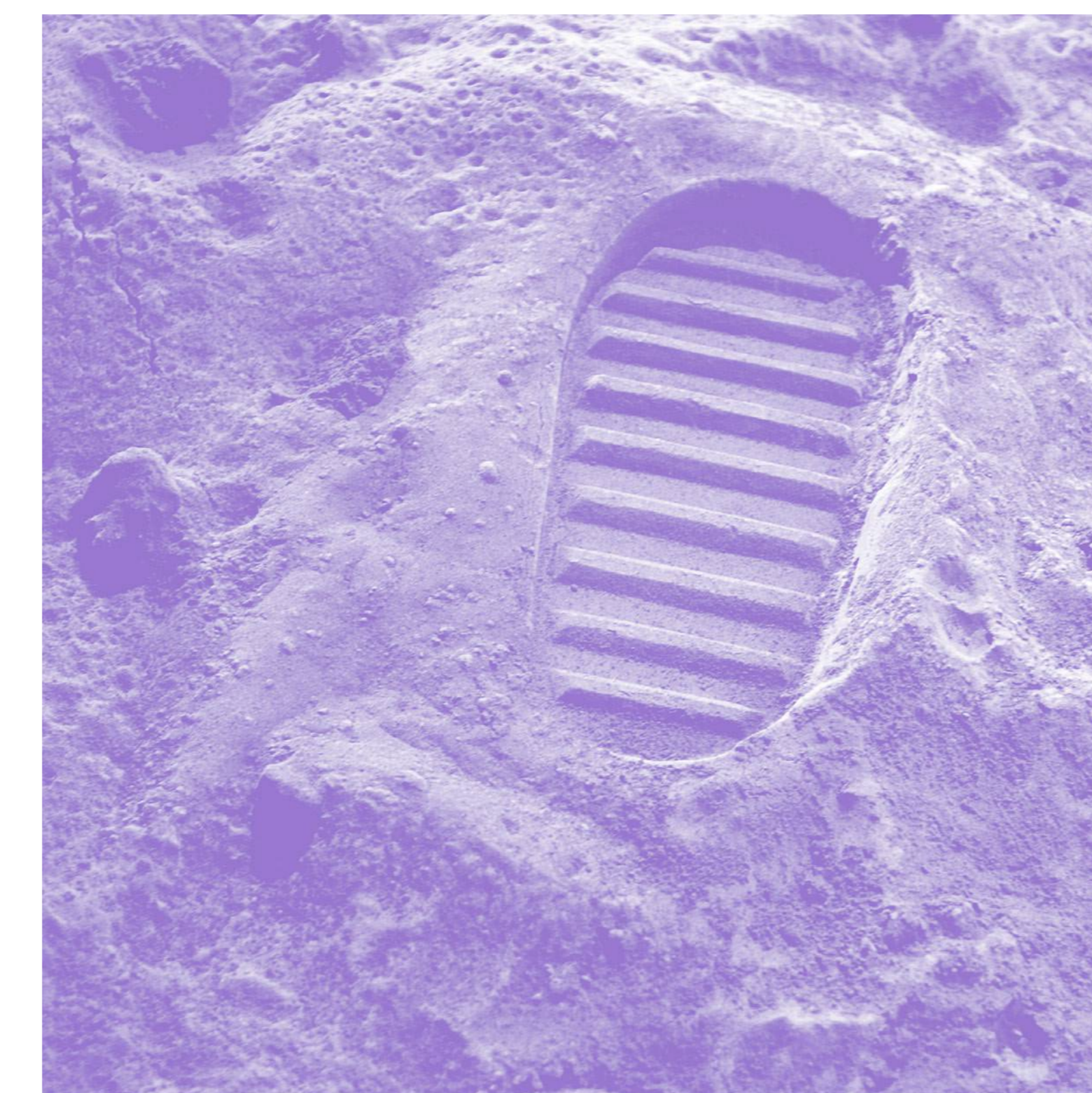
1967

NBHA

NBHA begin negotiating with local authorities to provide social housing that gives Customers a 'third choice' after private and council housing. Co-founder Harry Bentham is appointed Chief Executive.

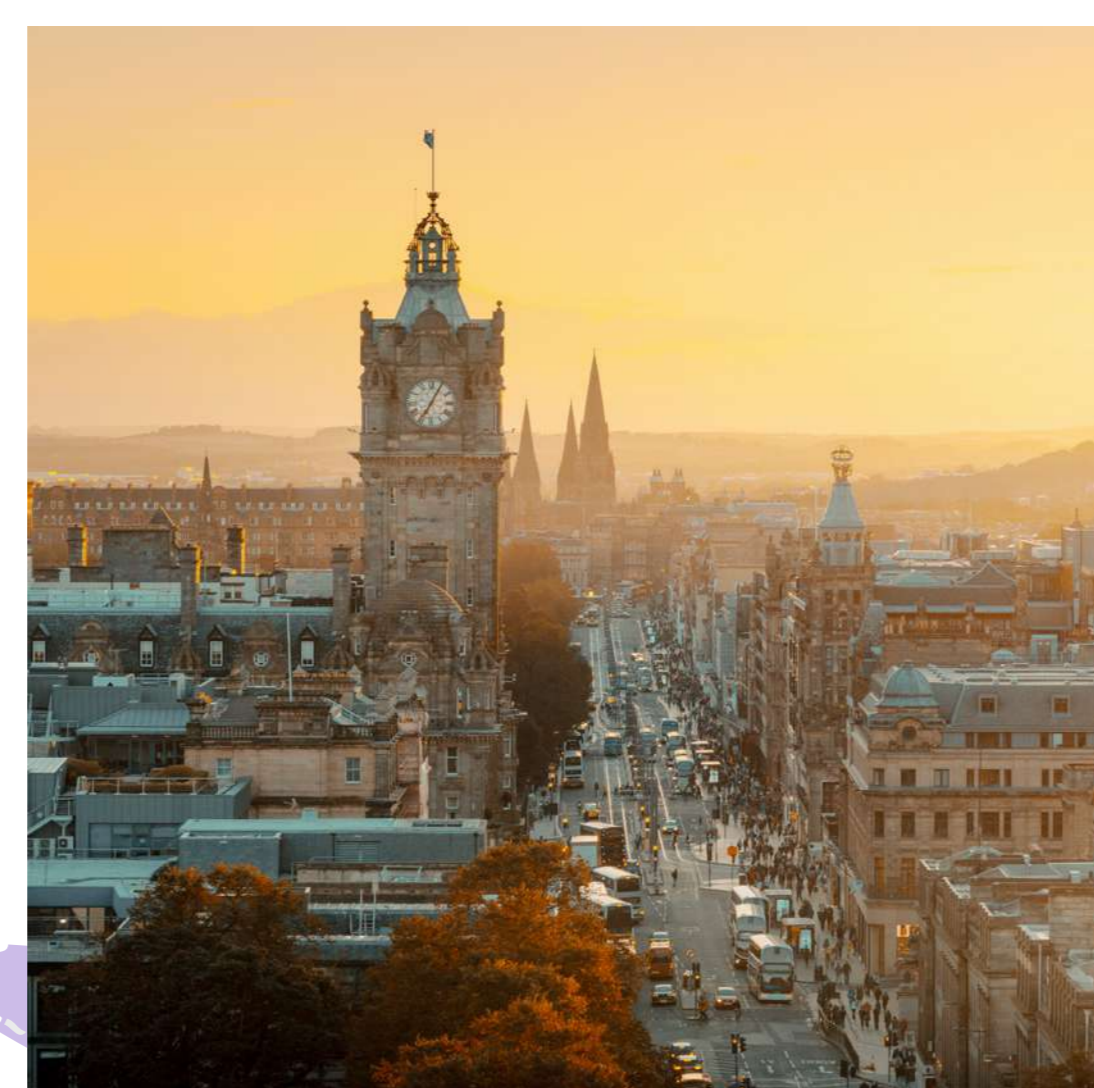


1968



Castle Rock, Scotland
Castle Rock is founded in Scotland, originally as Edinburgh Episcopalian Housing.


CASTLE ROCK EDINVAR
HOUSING ASSOCIATION



1969
APOLLO 11 LANDS
ON THE MOON



1971

1972



Charitable status

A subsidiary is set up with charitable status to look after the care and support element of the housing.



Edinvar

Edinvar is founded to provide housing for the University of Edinburgh Settlement, an early centre for social work committed to improving social conditions in the city.



10 DOWNING STREET
LONDON SW1A 2AA

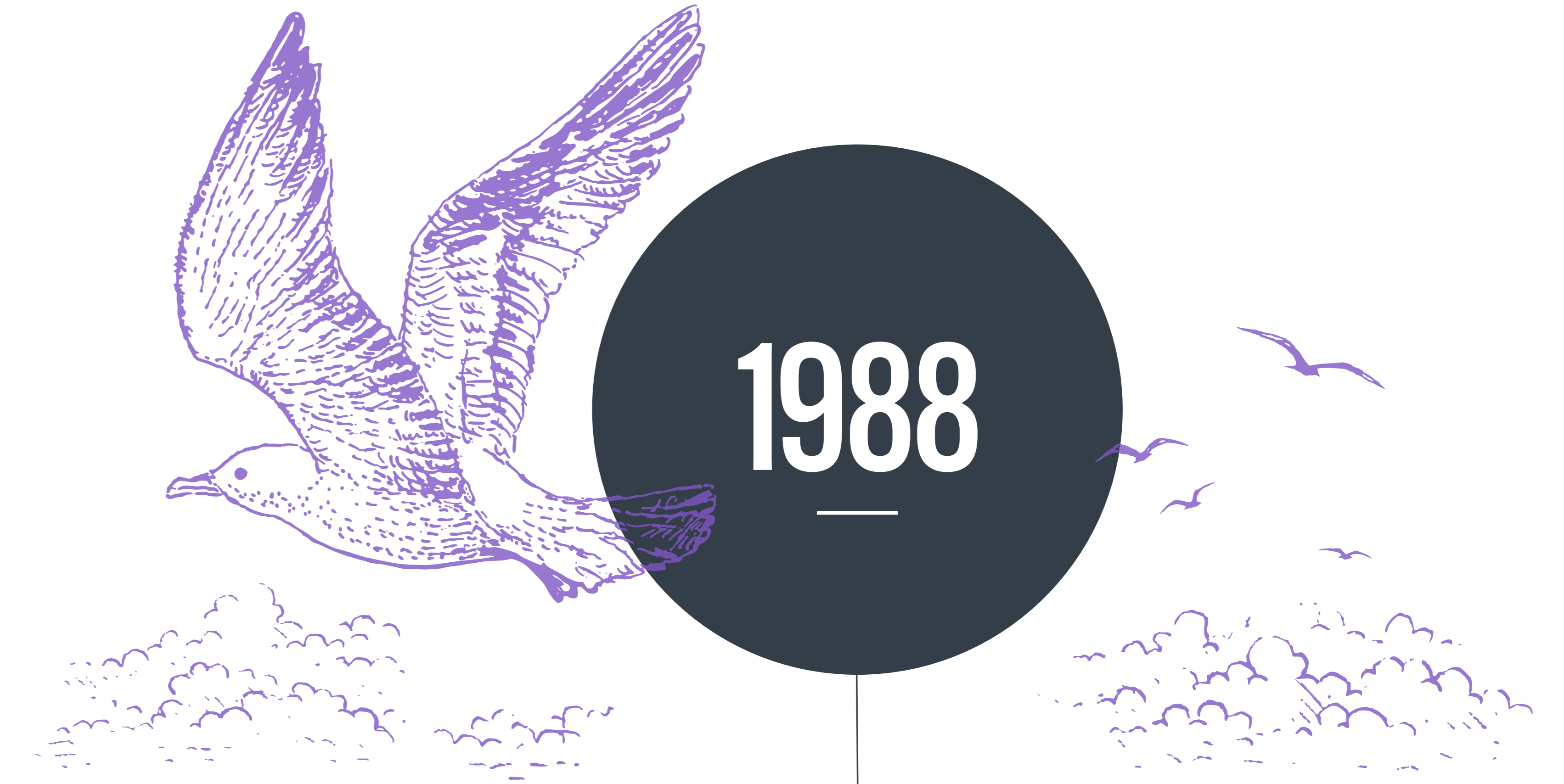
1979

MARGARET THATCHER ELECTED
AS PRIME MINISTER

1983



1985



1988

Harry Bentham retires

Harry Bentham retires as CEO and is replaced by Eric Armitage, who had previously worked for NBHA for seventeen years.



Over 3,500 homes are transferred to NBHA from the Central Lancashire Development Organisation.



Abbey National donation

NBHA purchases 3,000 homes from Seaside and Countryside Homes and receives its first private donation from Abbey National.





1989
THE BERLIN WALL FALLS, UNIFYING
EAST AND WEST GERMANY

1990

A merger with UK Housing Trust brings over 4,000 properties under NBHA's management, including London's largest homeless shelter, Arlington House.



World Wide Web

The WorldWideWeb (W3) is a wide-area, hypertext information retrieval initiative aiming to give universal access to a large universe of documents.
 Everything there is online about W3 is linked directly or indirectly to this document, including an [executive summary](#) of the project, [Mailing lists](#), [Policy](#), [November's W3 news](#), [Frequently Asked Questions](#).
 What's out there?
 Pointers to the world's online information, [subjects](#), [W3 servers](#), etc.
 Help
 on the browser you are using
[Software Products](#)
 A list of W3 project components and their current state. (e.g. [Lima Mode](#), [X11 Viola](#), [NeXTStep](#), [Servers](#), [Tools](#), [Mail robot](#), [Library](#)).
 Technical
 Details of protocols, formats, program internals etc
 Bibliography
 Paper documentation on W3 and references.
 People
 A list of some people involved in the project.
 History
 A summary of the history of the project.
 How can I help?
 If you would like to support the web.
 Getting code
 Getting the code by [anonymous FTP](#), etc.

1991
THE WORLD WIDE WEB IS
LAUNCHED FOR PUBLIC USE
FOR THE FIRST TIME



1997

1999

Eric Armitage retires as CEO and is replaced by David Cowans.

We merge with Bristol Churches Housing Association.



2000s

2000

North British Housing Association rebrands as Places for People.



2001

Kush Housing
One of the largest Black-led housing associations in London joins PfP.

2005

Castle Rock Edinvar
A merger of two housing associations - both part of PfP Group - forms Castle Rock Edinvar. The merger includes Edinvar Community Care and Lothian Homes.



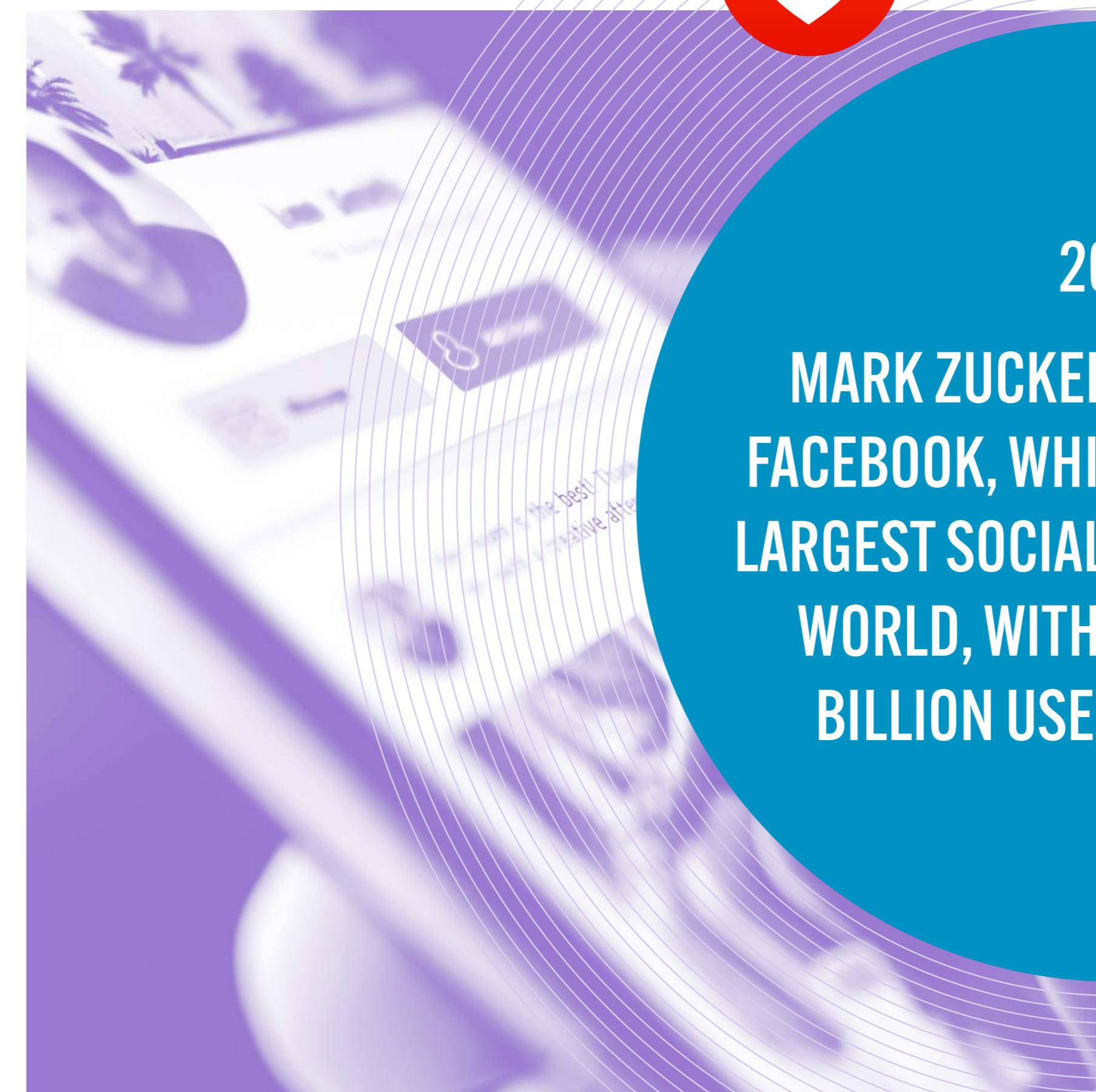
Castle Rock Edinvar

Housing Association

Part of Places for People

2004

MARK ZUCKERBERG INVENTS FACEBOOK, WHICH BECOMES THE LARGEST SOCIAL NETWORK IN THE WORLD, WITH NEARLY THREE BILLION USERS AS OF 2021.





2012

2014



The Group buys Touchstone and now manages 24,000 homes in the private rental sector.

 **Touchstone**

Part of Places for People


Brooklands

Places for People joins forces with Barratt Homes to deliver 2,000 homes together with green open spaces, schools, play and recreation facilities at Brooklands, an urban extension to Milton Keynes.



2007
APPLE LAUNCHES THE
FIRST IPHONE

2012
LONDON HOSTS THE 2012
SUMMER OLYMPICS




2017



2018



Derwent Housing Association,
Places for People merges with
Derwent Housing Association with
properties stretching from Sheffield
to Milton Keynes.

Luminous
A merger takes place with Luminous,
a housing association based in
Huntingdon, Cambridgeshire.

Derwent living
Part of Places for People



2020
THE COVID 19
PANDEMIC IS DECLARED

2021

DAVID COWANS STEPS DOWN AS CEO AND IS REPLACED BY CURRENT CHIEF EXECUTIVE GREG REED.



2023

Castle Rock Edinvar rebrands as Places for People Scotland.



PfP acquires Igloo Regeneration, the UK's first real estate B-Corporation with a shared mission of creating thriving Communities.



2023
CORONATION OF CHARLES III